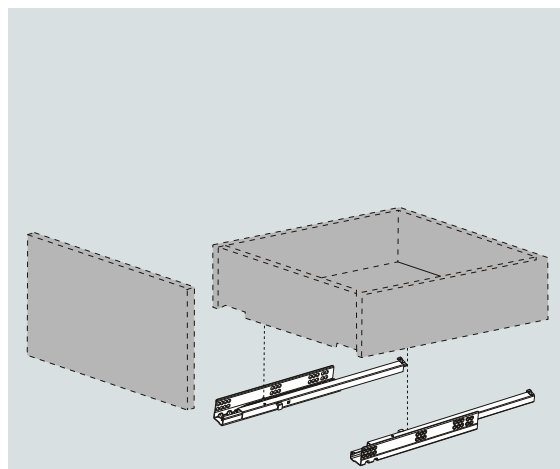
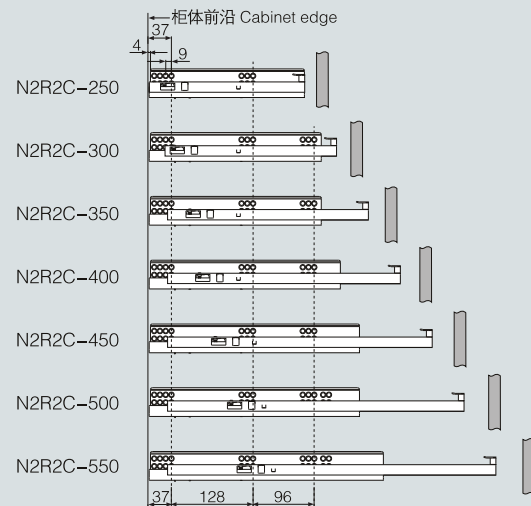


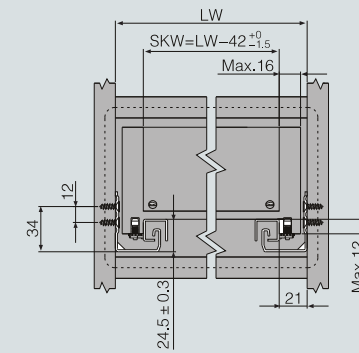
- 隐藏式、反弹式
- 载重: 25kg
- 材料: 镀锌板
- 材料厚度(上、下轨): 1.5x1.5mm
- 无需工具, 抽屉可快速安装与拆卸
- 抽屉高度可调节0-4mm
- Concealed, push-open
- Dynamic load capacity: 25kg
- Material: galvanized steel
- Material thickness: 1.5x1.5mm
- Tool-free quick installation
- Drawer height is adjustable for 0-4mm

柜体滑轨安装孔尺寸 Hole pattern



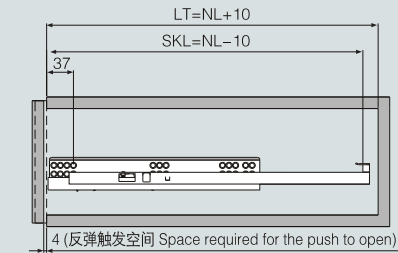
柜体所需空间 Space required

SKW: 抽屉净宽 Drawer width
LW: 柜体净宽 Inside net width
Max.: 最大尺寸



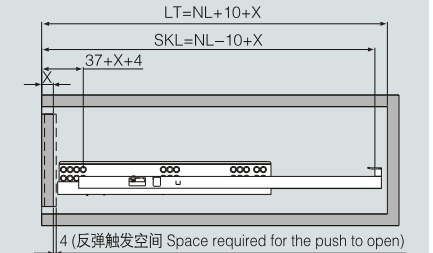
外置抽屉 Standard drawer

NL: 标称长度 Nominal length
SKL: 抽屉长度 Length of drawer
LT: 最小柜深 Min cabinet depth



内置抽屉 Inner drawer

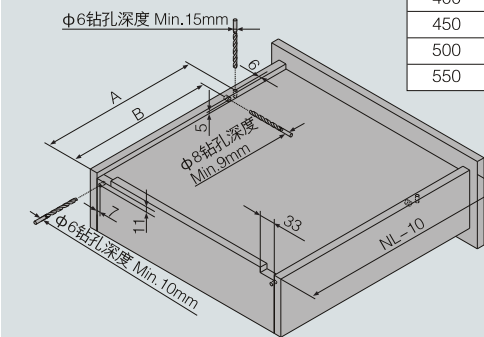
NL: 标称长度 Nominal length
SKL: 抽屉长度 Length of drawer
LT: 最小柜深 Min cabinet depth
X: 面板厚度 Thickness of the front panel



抽屉后板开槽打孔尺寸 Hole size on rear panel of the drawer

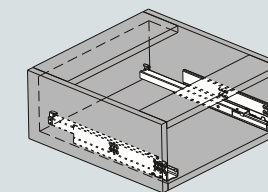
NL: 标称长度 Nominal length
Min.: 最小尺寸

NL (mm)	A (mm)	B (mm)
250	220	188
300	245	213
350	270	238
400	305	273
450	330	298
500	355	323
550	390	358

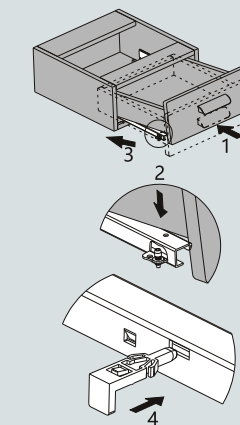


装卸调试步骤说明 Installation instruction

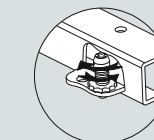
滑轨安装 Installation of the slides



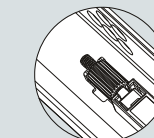
抽屉安装 Installation of the drawer



抽屉调节 Drawer adjustment

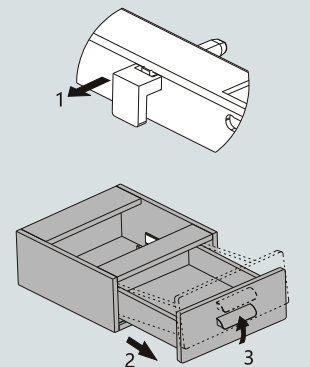


可通过调节轮调节抽屉高度4mm
Drawer height can be adjusted 4mm through the adjustable screw



抽屉可通过旋转螺母来调节前后2mm
The drawer can be adjusted 2mm horizontally through nut

抽屉拆卸 Removal of the drawer



产品型号 Item No.	标称长度NL (mm) Nominal length	拉出长度 (mm) Travel length	最小柜深LT (mm) (外抽 / 内抽) Min cabinet depth (Standard / Inner)	包装 (套/箱) Packing (Set/Box)
N2R2C-250	250	164	260 / 260+X	10
N2R2C-300	300	201	310 / 310+X	10
N2R2C-350	350	251	360 / 360+X	10
N2R2C-400	400	276	410 / 410+X	10
N2R2C-450	450	326	460 / 460+X	10
N2R2C-500	500	351	510 / 510+X	10
N2R2C-550	550	376	560 / 560+X	10